

CODECASA 50s

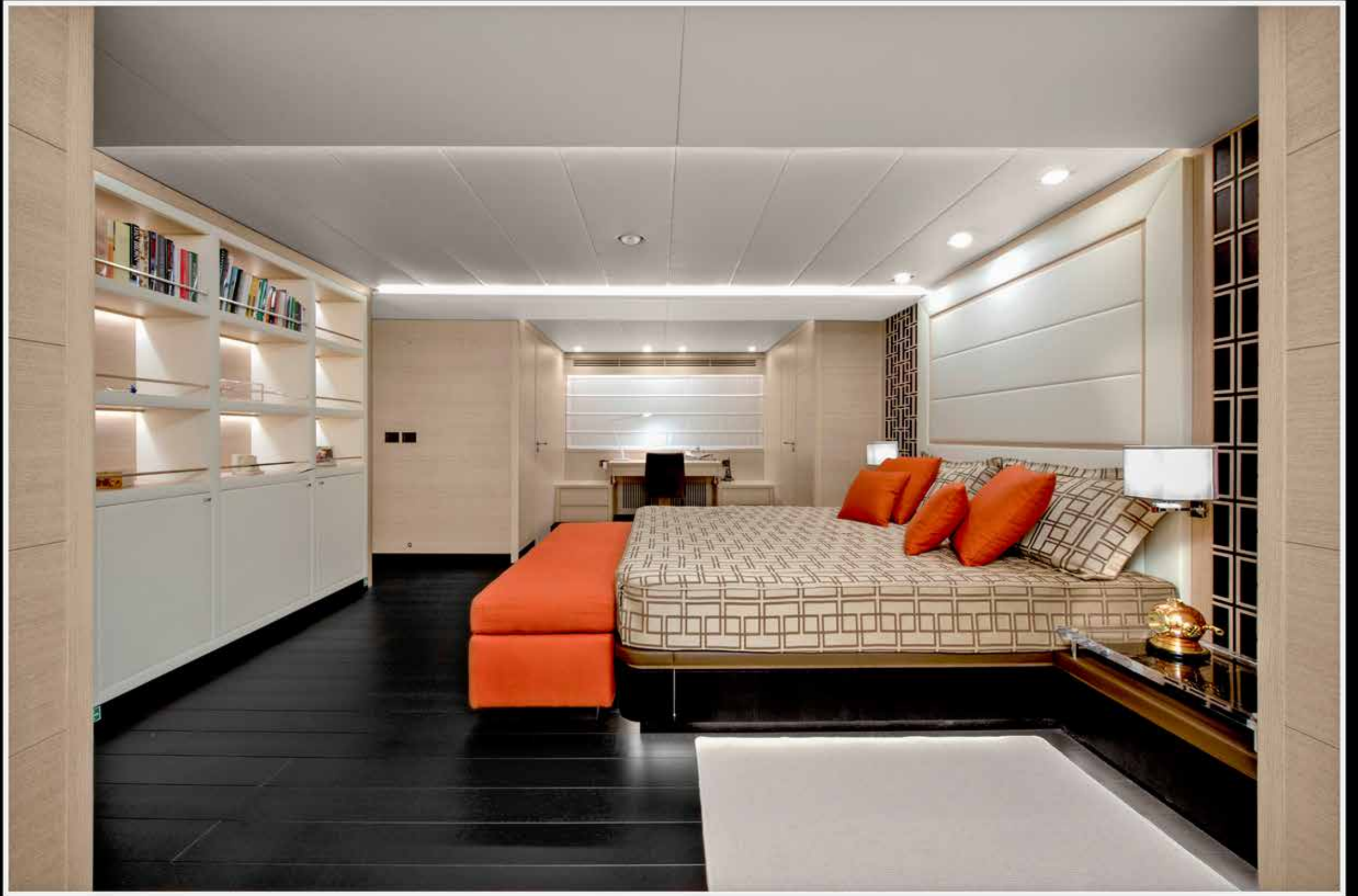


Framura 3



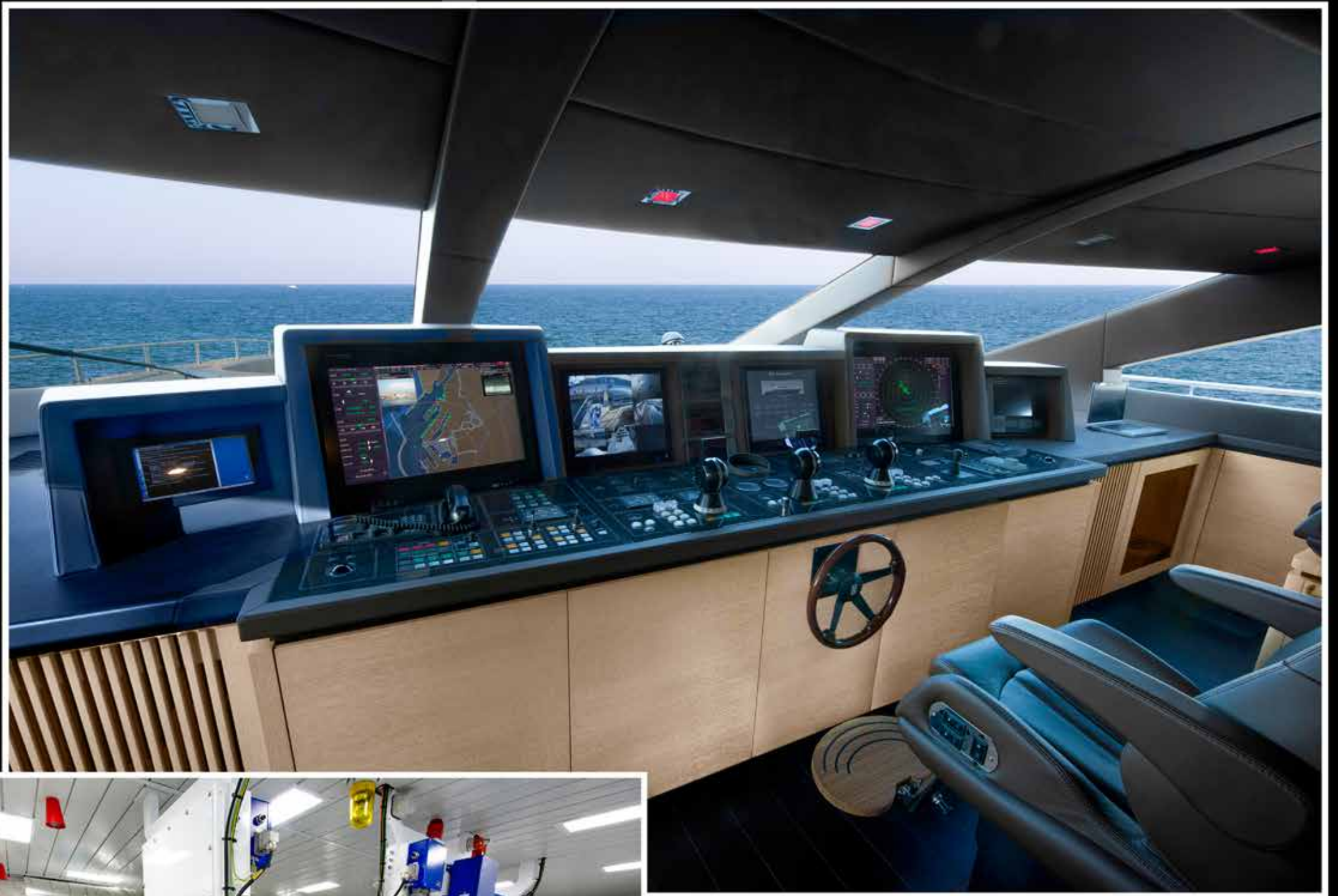












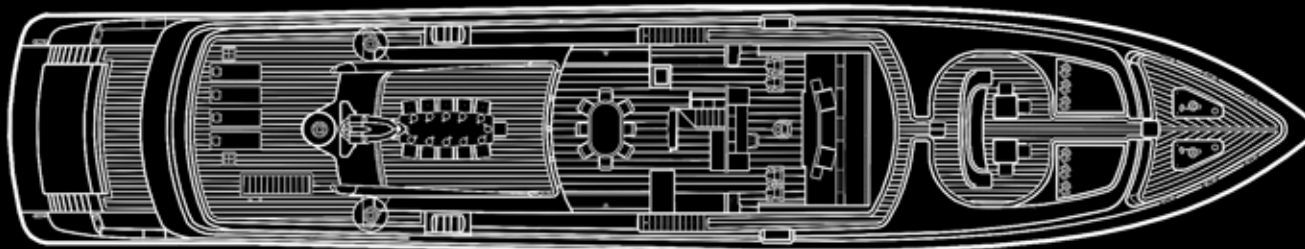




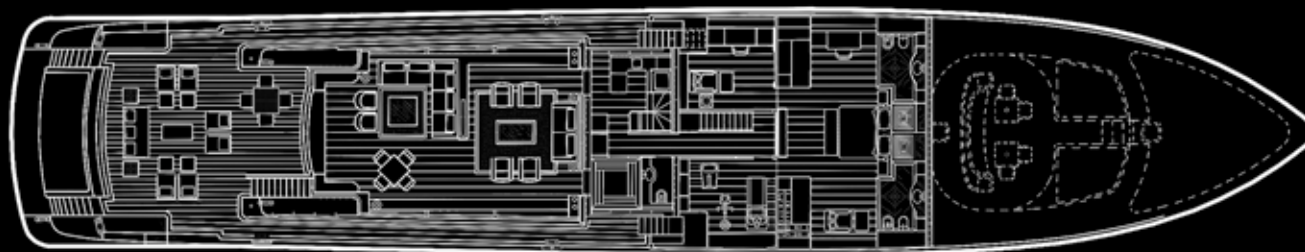




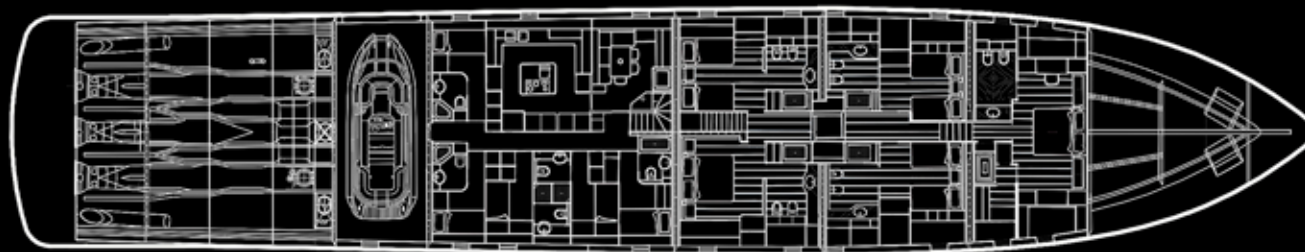
PROFILE



BRIDGE DECK



MAIN DECK



LOWER DECK



Framura 3

2013

HULL C 120

LENGHT OVERALL	49.90 METERS
WATERLINE LENGTH	42.20 METERS
MAXIMUM BEAM	9.20 METERS
MAXIMUM DRAFT	1.75 METERS
HULL & SUPERSTRUCTURE	ALUMINIUM 5083 H 321/111
CLASSIFICATION	ABS ✕ A1 (E) YACHTING SERVICE ✕ AMS FULL COMPLIANT WITH MALTA COMMERCIAL YACHT CODE FOR SHORT RANGE NAVIGATION
FULL LOAD DISPLACEMENT	280 TONS APPROX
LIGHT DISPLACEMENT	240 TONS
MAIN ENGINES	3 MTU 16V 2000 M94 HP 2600 EACH @ 2450 RPM
PROPULSION	2 KA.ME.WA. WATER JETS MOD. 80 S III 1 BOOSTER KA.ME.WA. MOD. 71 B III
LIGHT DISPLACEMENT MAX SPEED	28 KNOTS
LIGHT DISPLACEMENT CRUISE SPEED	18 KNOTS
RANGE	1.000 NAUTICAL MILES @ CRUISING SPEED
FUEL OIL CAPACITY	45.000 LITERS
FRESH WATER CAPACITY	5.000 LITERS
GUESTS' CABINS	OWNER'S SUITE 1 VIP DOUBLE BED CABIN 1 DOUBLE BED GUESTS' CABIN 3 TWIN BED CABINS
CREW CABINS	1 CAPTAIN'S CABIN 4 TWIN BED CABINS



SINCE 1825

CODECASA CANTIERI NAVALI spa - PIAZZALE SAN BENEDETTO DEL TRONTO, 4 - 55049 VIAREGGIO - ITALIA - TEL. 0584-383221 - TELEFAX 0584-383531

E-MAIL: info@codecasayachts.com

<http://www.codecasayachts.com>